

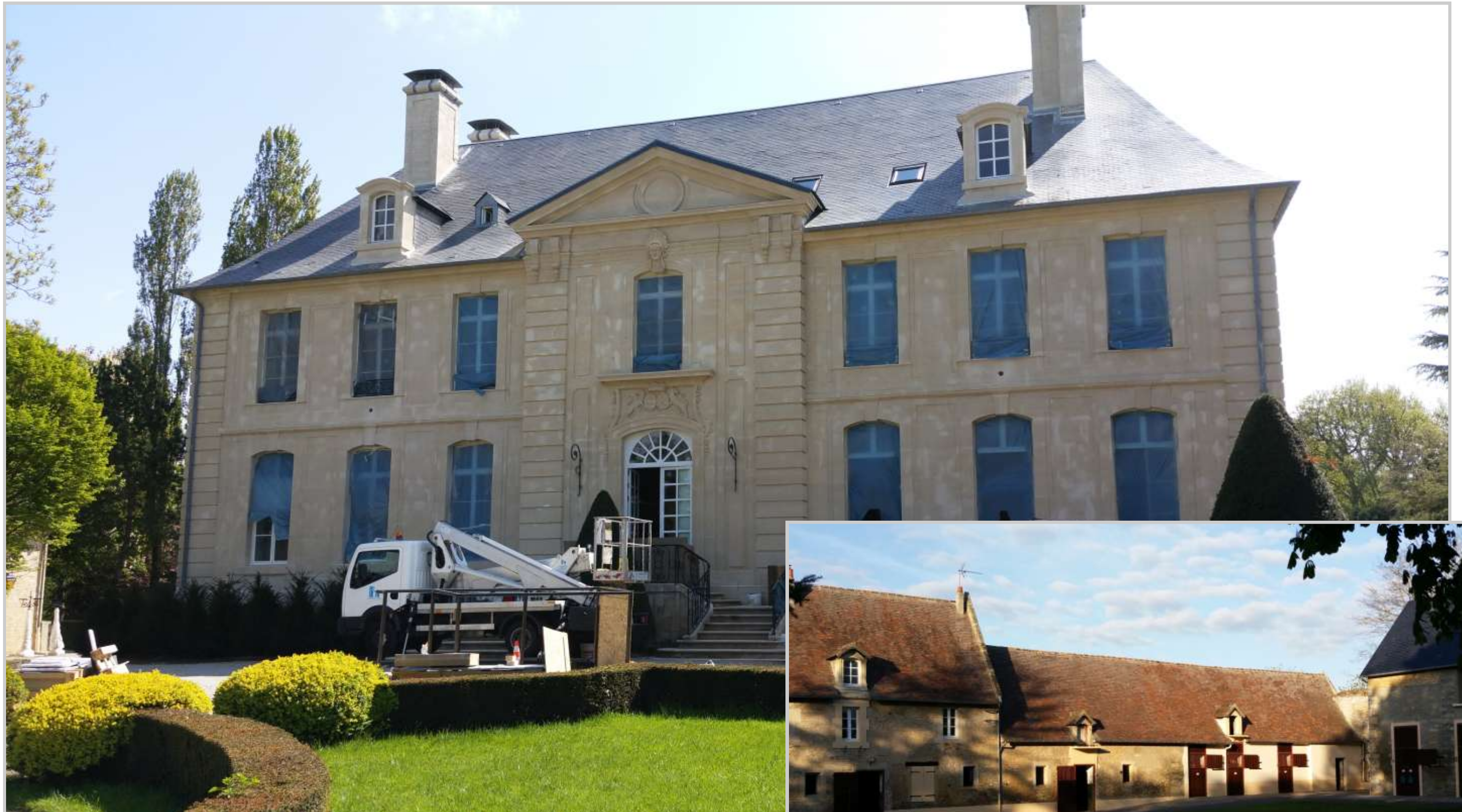


PETER WELDON
IRON DESIGNS LTD.

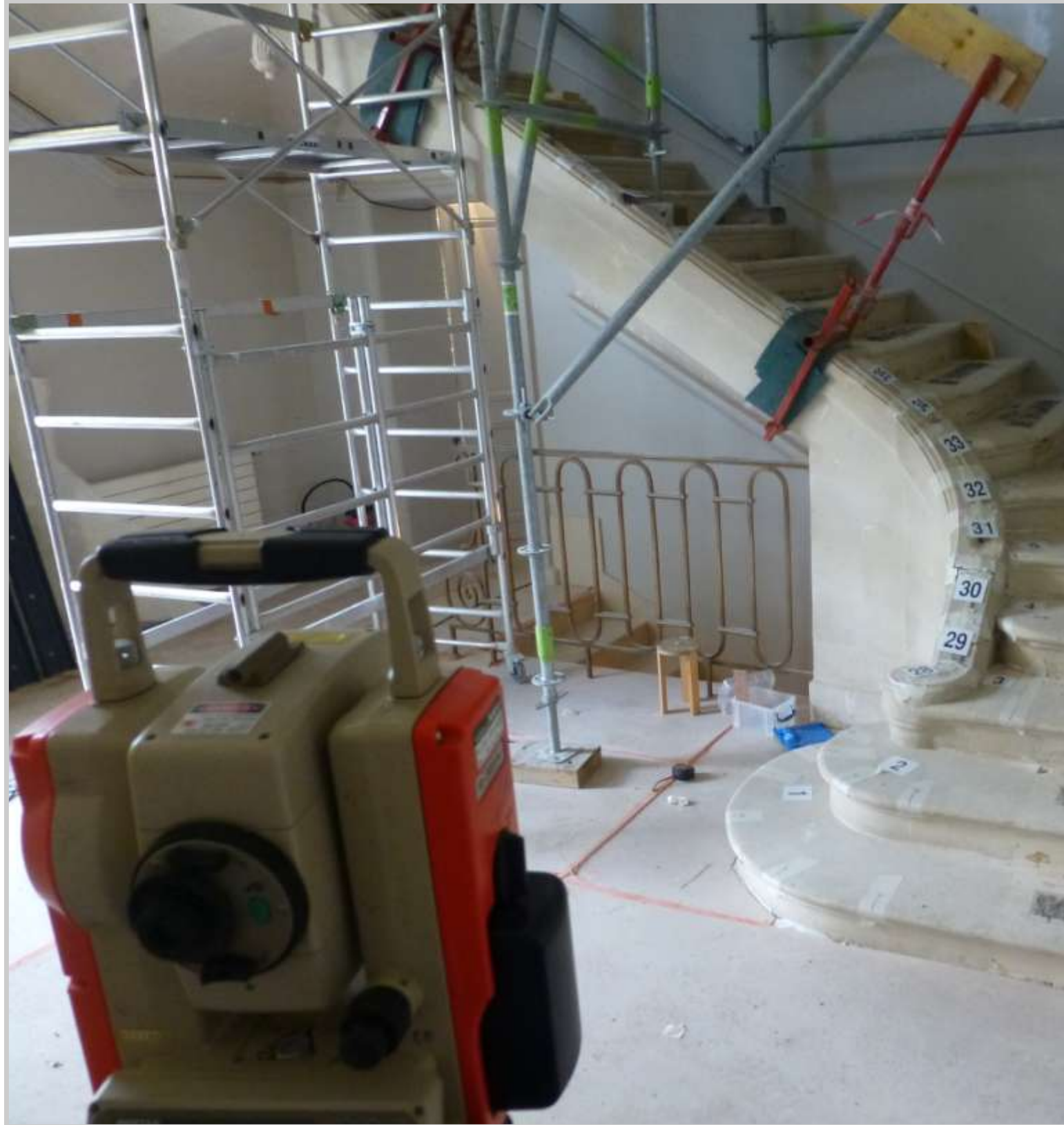
Design and Manufacture of Period and Architectural Ironwork

January 2015

Peter Weldon Iron Designs & Aquairon were commissioned to design and manufacture the internal and external stair balustrades for a privately owned property in Normandy, France. The following pages show the internal staircase only and illustrate the process from initial survey to manufacture and installation.



The staircase was surveyed and accurate co-ordinates of each tread were taken using Pentax Total Station.



Manufacturing images.



Collars for the vertical sections.

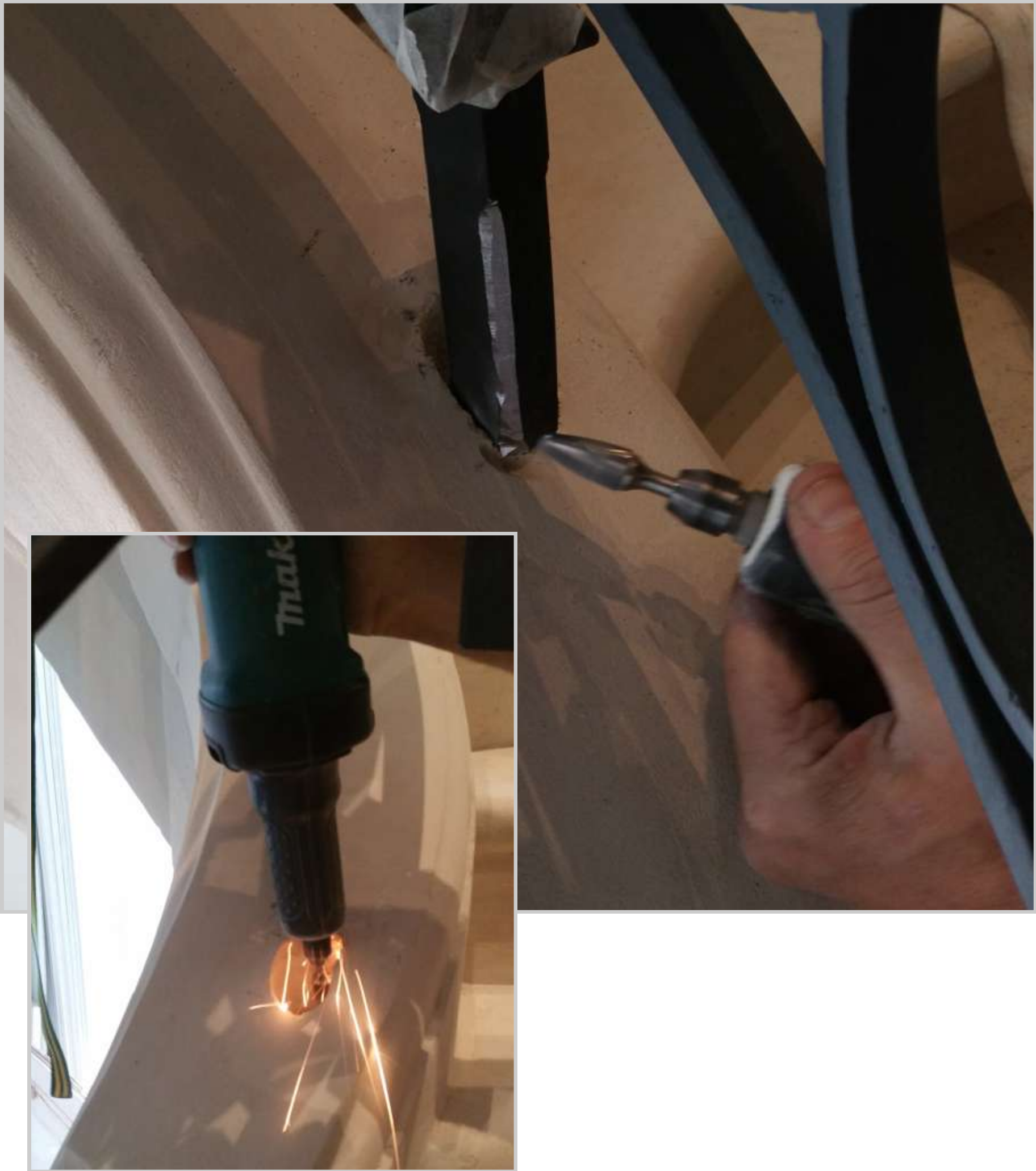




The items are professionally packed and transported to the property in large crates.

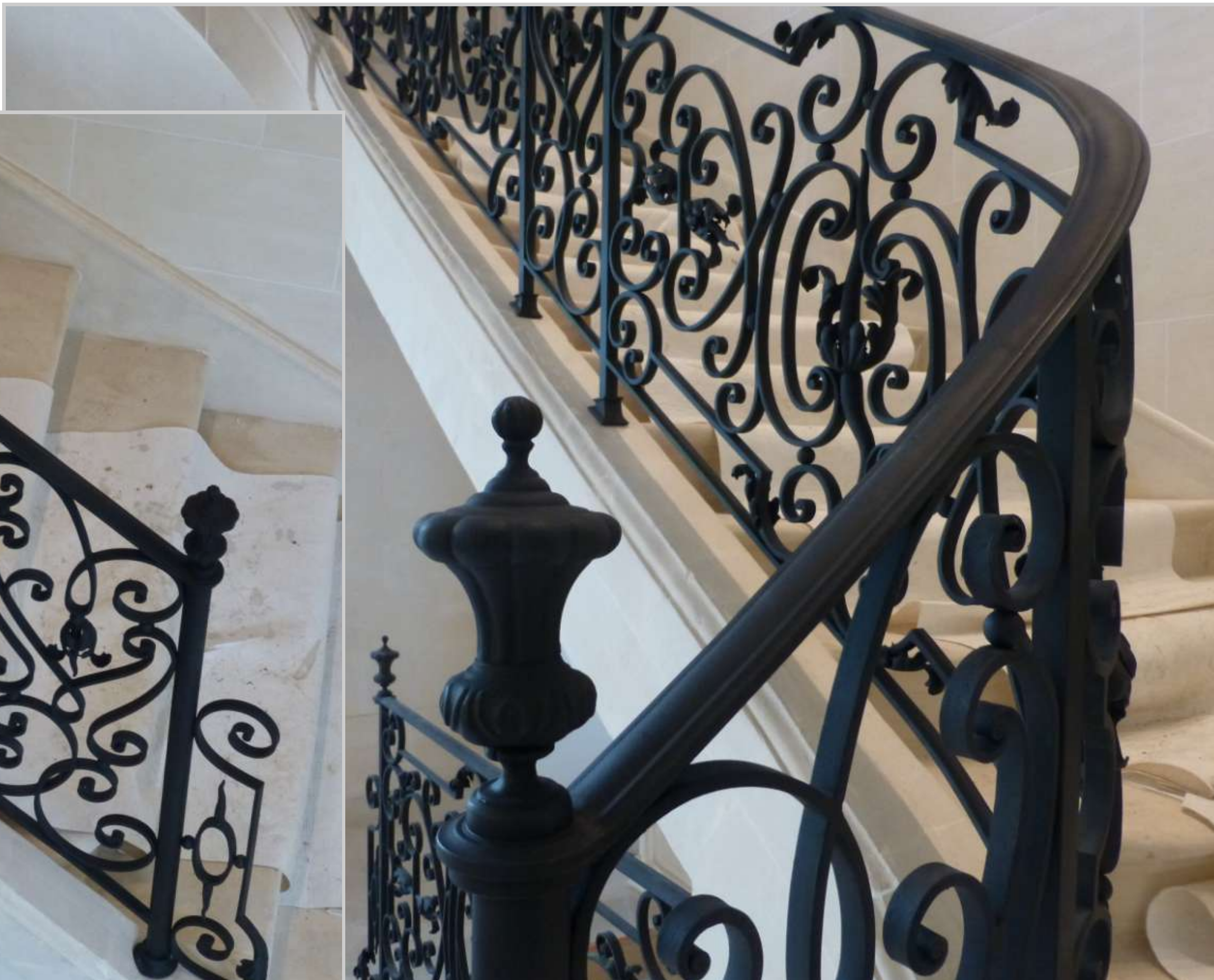


Using the survey co-ordinates each vertical has a recess core drilled.





The staircase installed without the gold leaf.







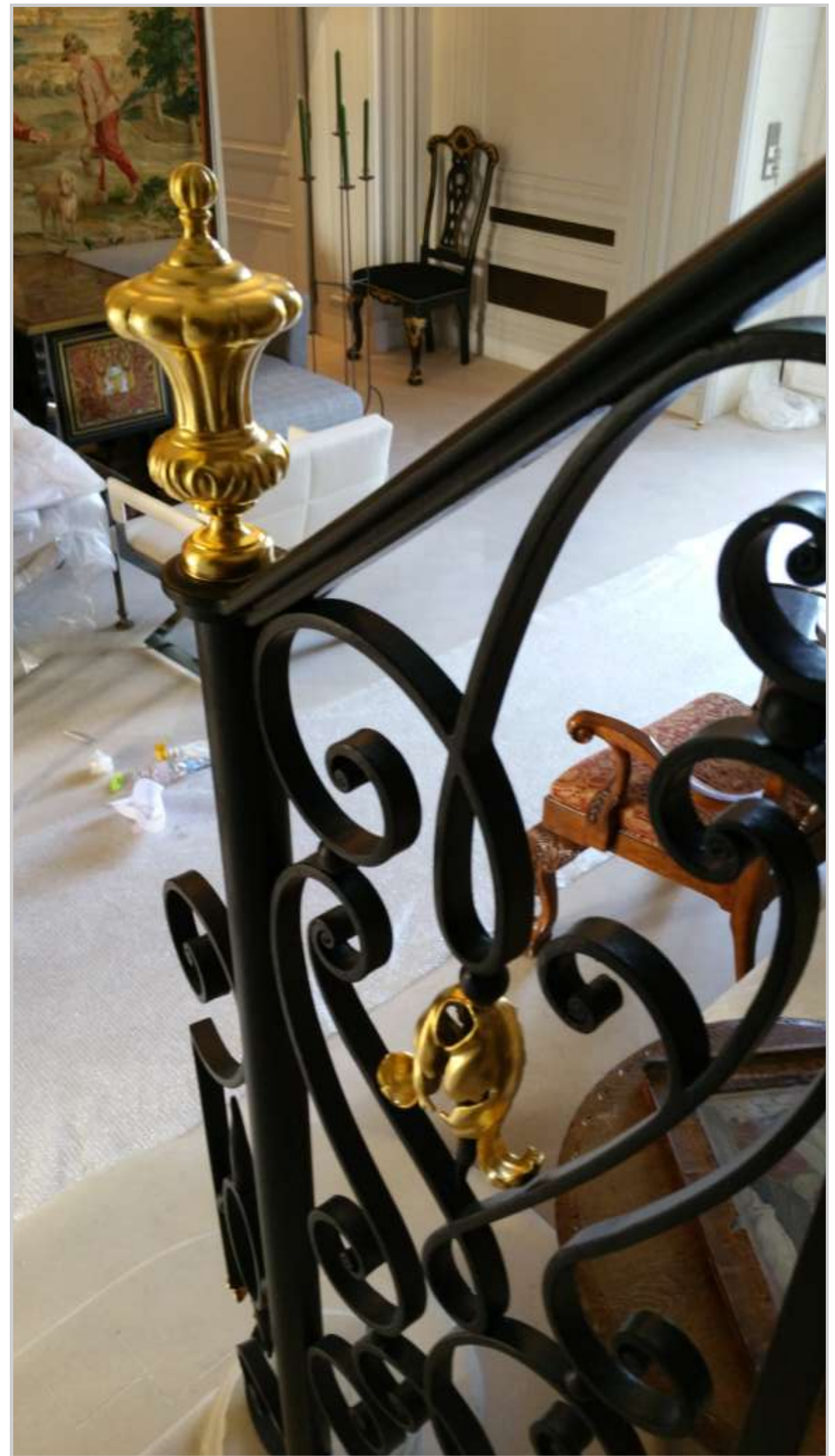
















PETER WELDON
IRON DESIGNS LTD.

Contact:
Peter Weldon
Peter Weldon Iron Designs Ltd.
Gwynfryn,
Llanpumsaint,
Carmarthen,
Dyfed
SA33 6LA
Tel: 0845 612 5746
sales@peterweldon.co.uk
www.peterweldon.co.uk



Peter Weldon 2014

Peter Weldon.

Design and Manufacture of Period and Architectural Ironwork